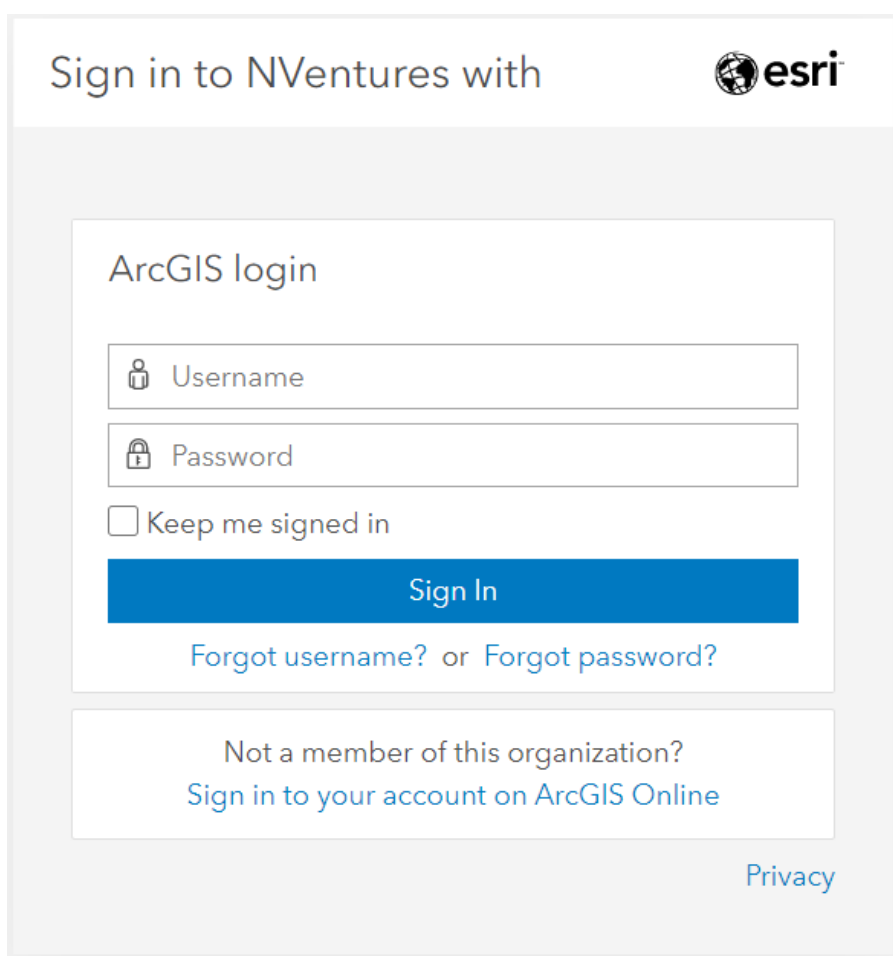




Welcome to the NVentures GIS Exploration Viewer Quick Start Guide.

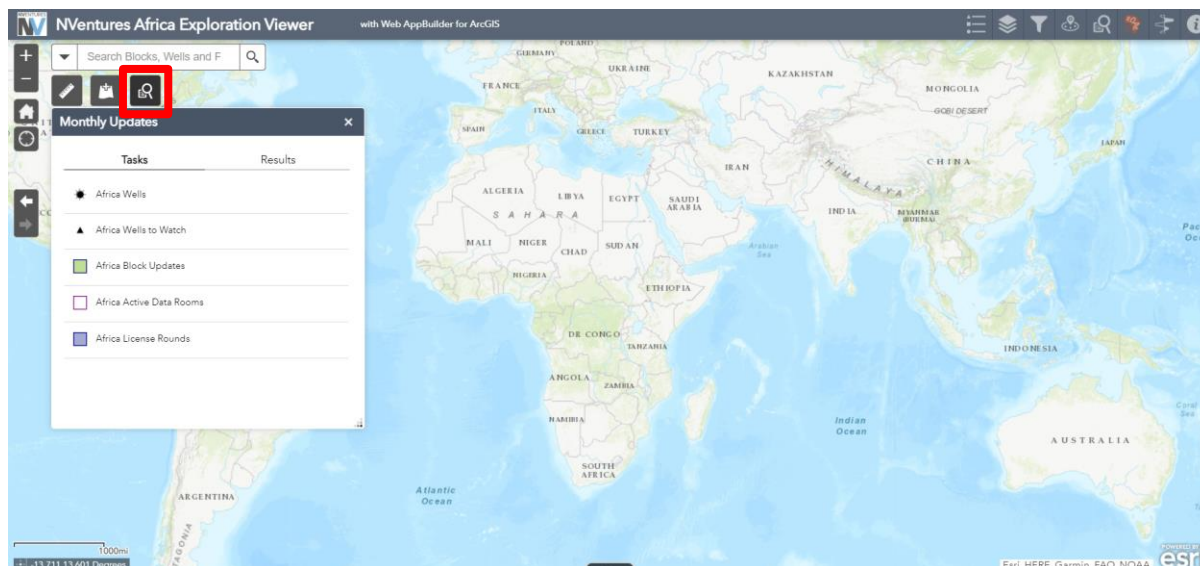
If you have been provided with an ArcGIS log in by **NVentures**, enter the user name and password credentials given.

If you have been provided with an ArcGIS log in by **your organisation**, at the bottom of the landing page, click 'Sign in to your account on ArcGIS Online' then enter the username and password credentials given.

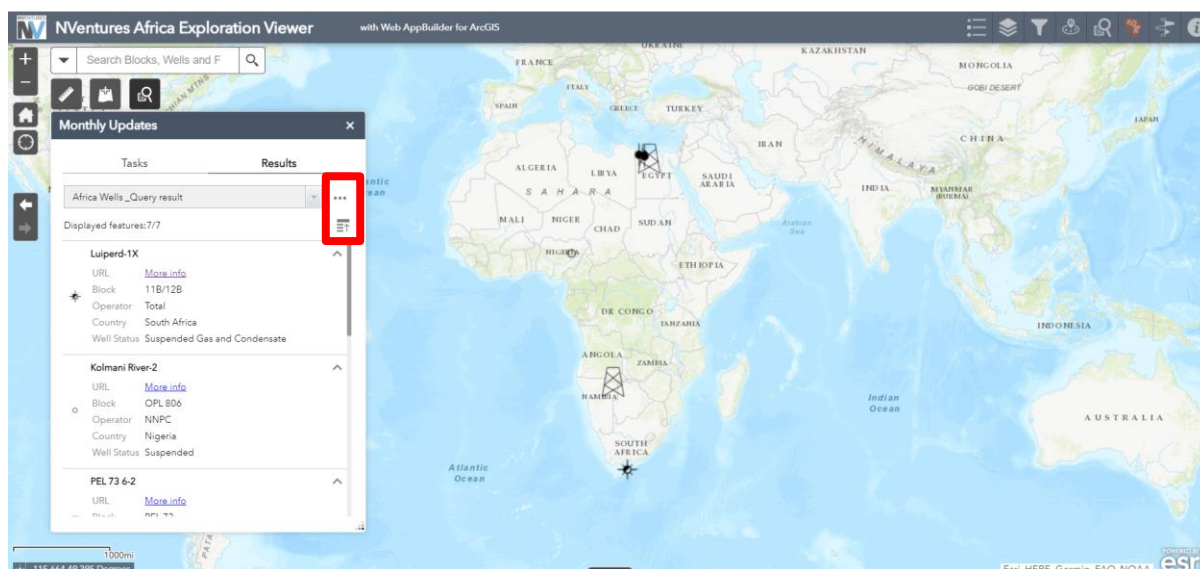


The screenshot shows a login window titled "Sign in to NVentures with" with the Esri logo. Inside the window is a box labeled "ArcGIS login" containing two input fields: "Username" (with a person icon) and "Password" (with a lock icon). Below these fields is a checkbox labeled "Keep me signed in". A blue "Sign In" button is positioned below the checkbox. Under the button are the links "Forgot username?" and "Forgot password?". At the bottom of the login box is the text "Not a member of this organization?" followed by the link "Sign in to your account on ArcGIS Online". In the bottom right corner of the login window is a "Privacy" link.

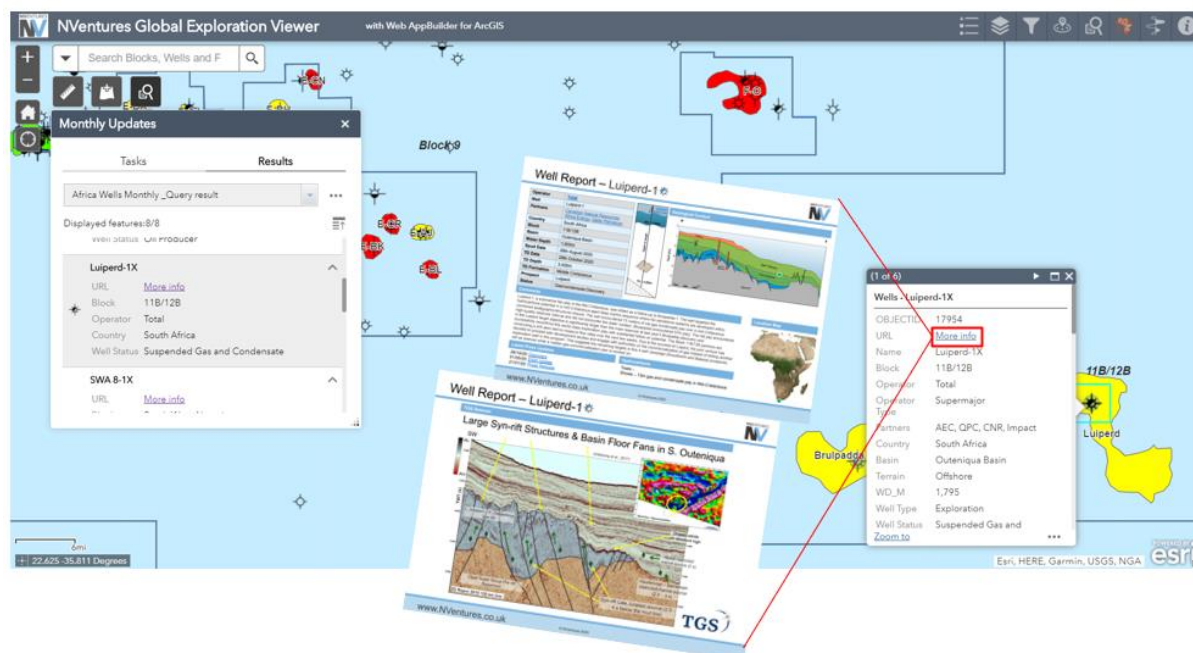
On the start page, you will see the Monthly Updates Table. This can be opened or closed using the highlighted button. The Monthly Updates table provides access to updates for Drilling, Deals, and monthly high impact Wells to Watch, in addition to highlighting Licencing Round and Active Data Room (ADR) opportunities.



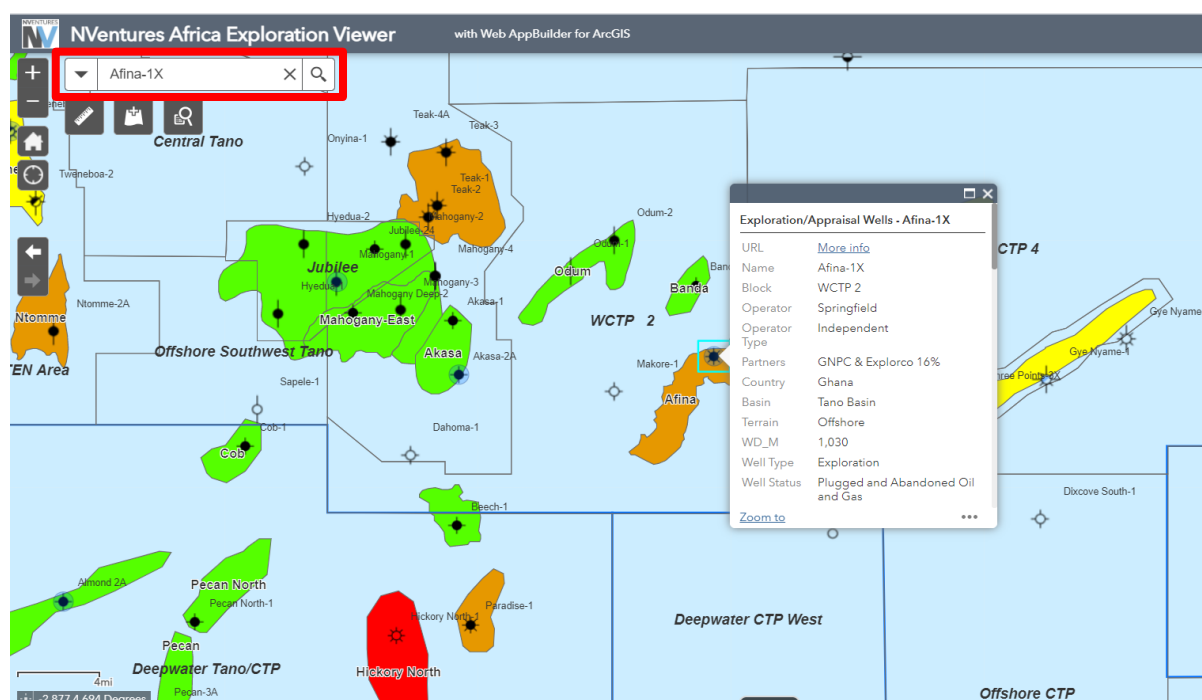
Clicking on a feature in the Monthly Updates table (this example is showing Africa Monthly Wells) provides a list of the activity for the past month and a summary table.



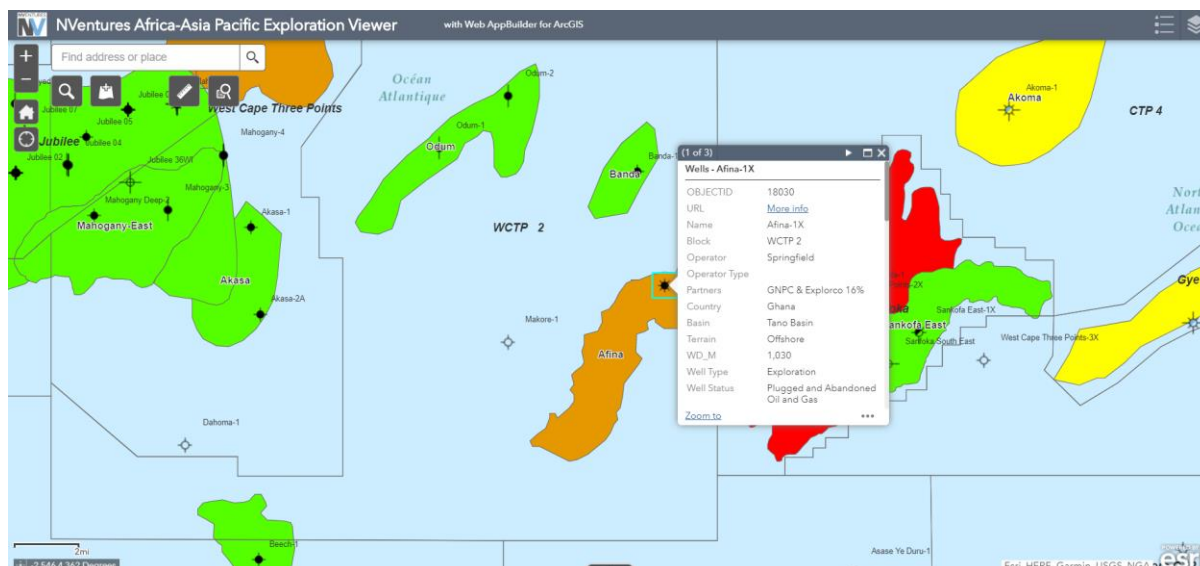
Clicking on a result will zoom you to the target, with the “More info” hyperlink taking you through to the NVentures Well Montage. Clicking on the three dots next to the query result will bring up options to export content, and view in the attribute table. Clicking the button below this collapses the query results.



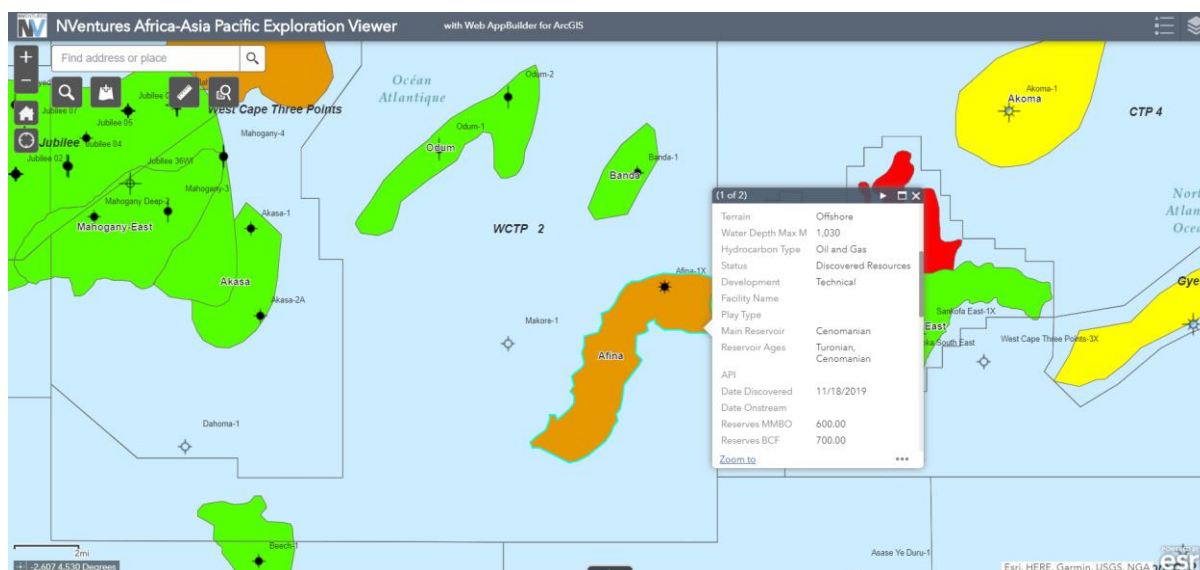
Click on the search button to bring up the main search feature linked to the database. Type a well, block, field name within the lower search box and the database will provide search results. Click on the result to zoom directly to the selected feature.



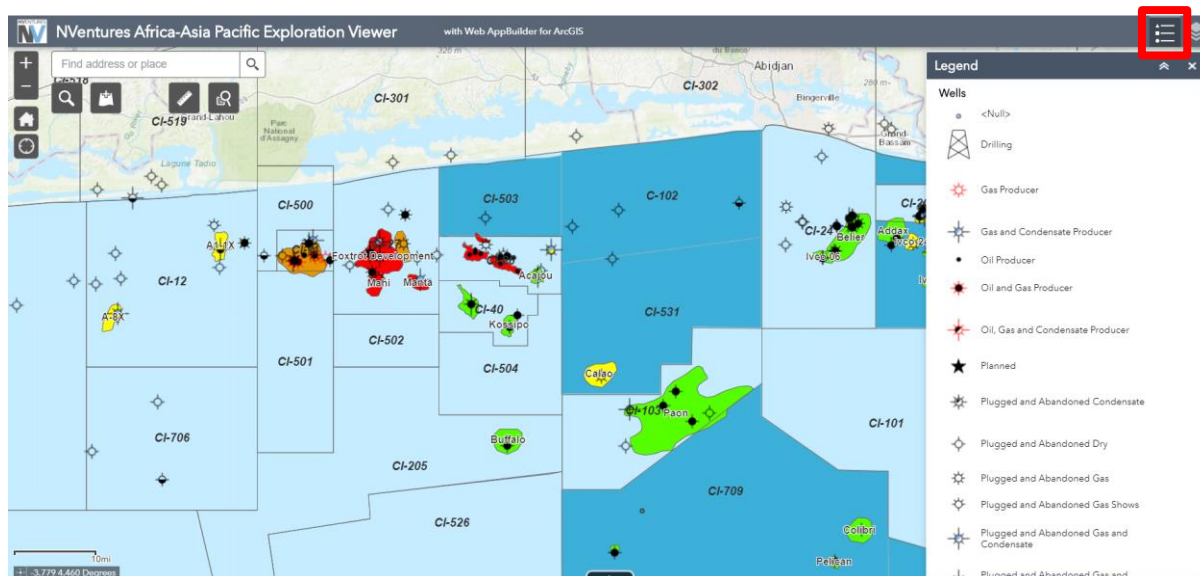
Click on a well to bring up the list of attribute data. Where a NVentures Well Montage is present, click on the “More info” hyperlink to take you through to the full montage.



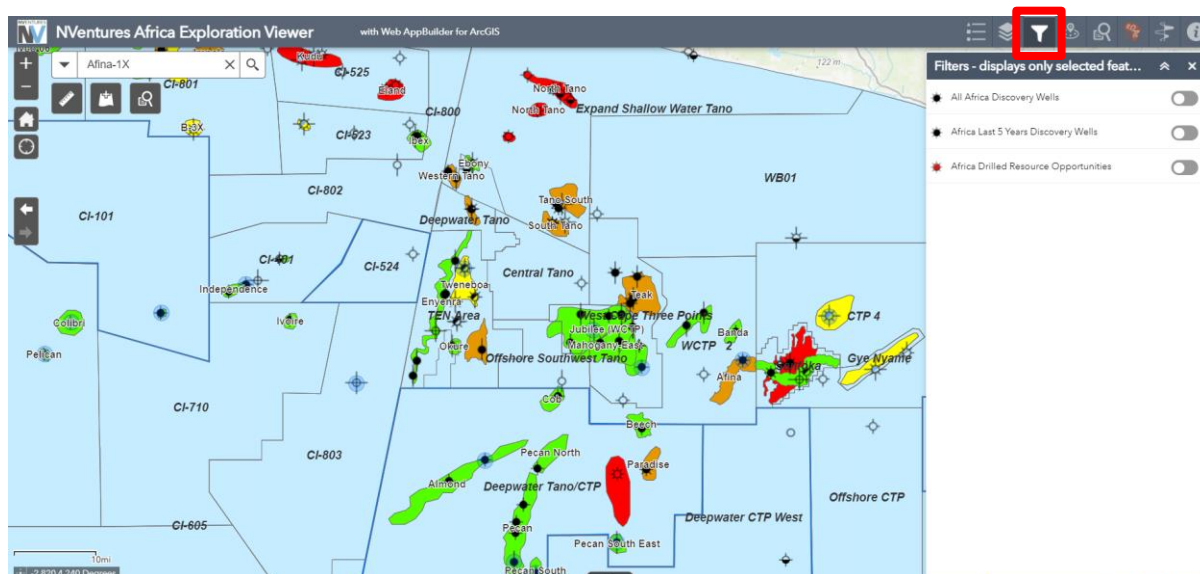
Click on a hydrocarbon field for attribute information.



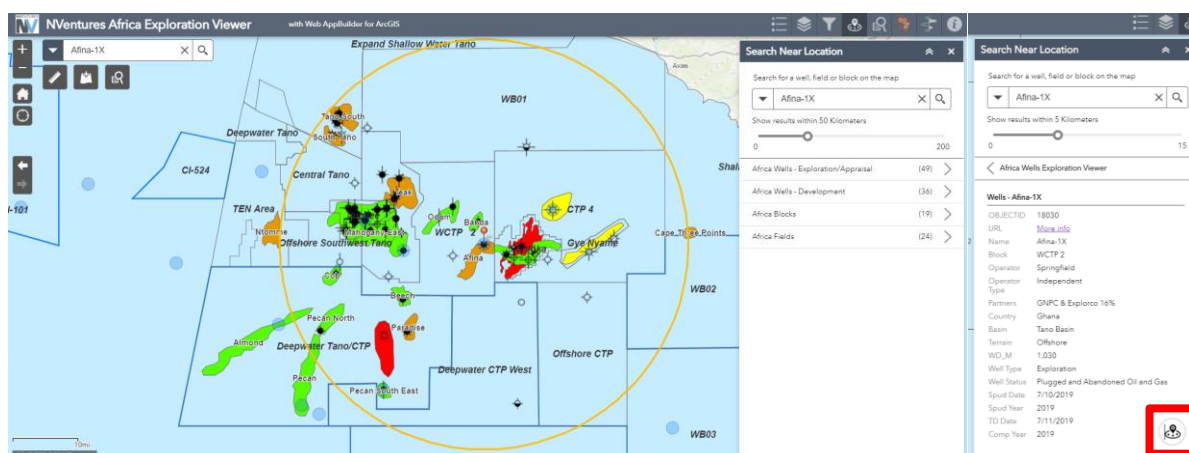
The Legend button in the top right of the viewer provides full legend identification.



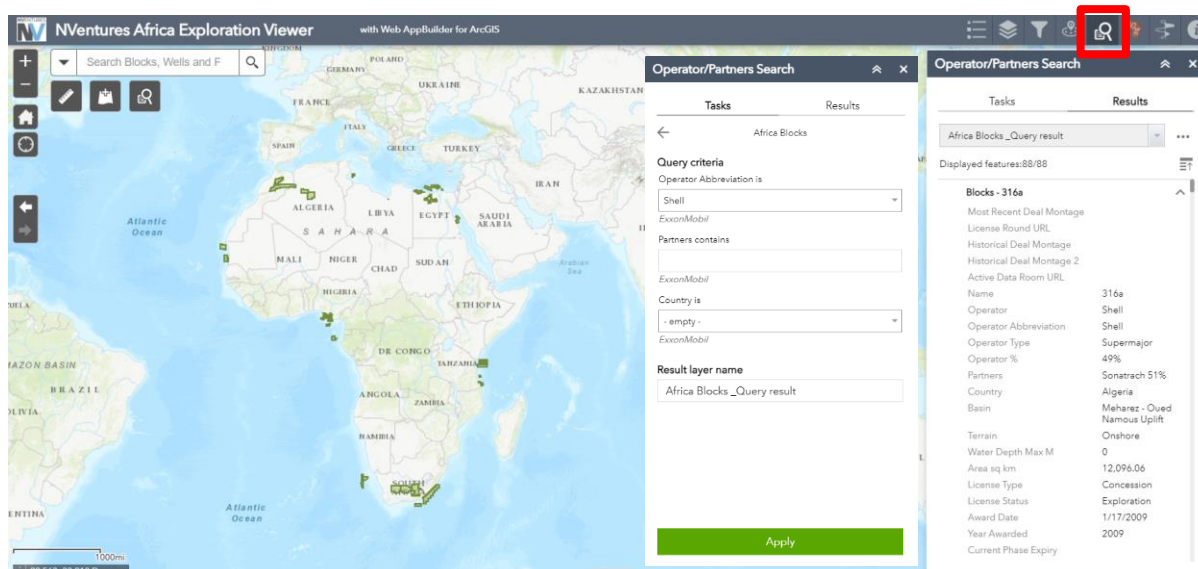
Click on the Filter Button in the ribbon on the top right hand corner to focus on discovery wells, and Drilled Resource Opportunities – to highlight discovered but undeveloped fields.



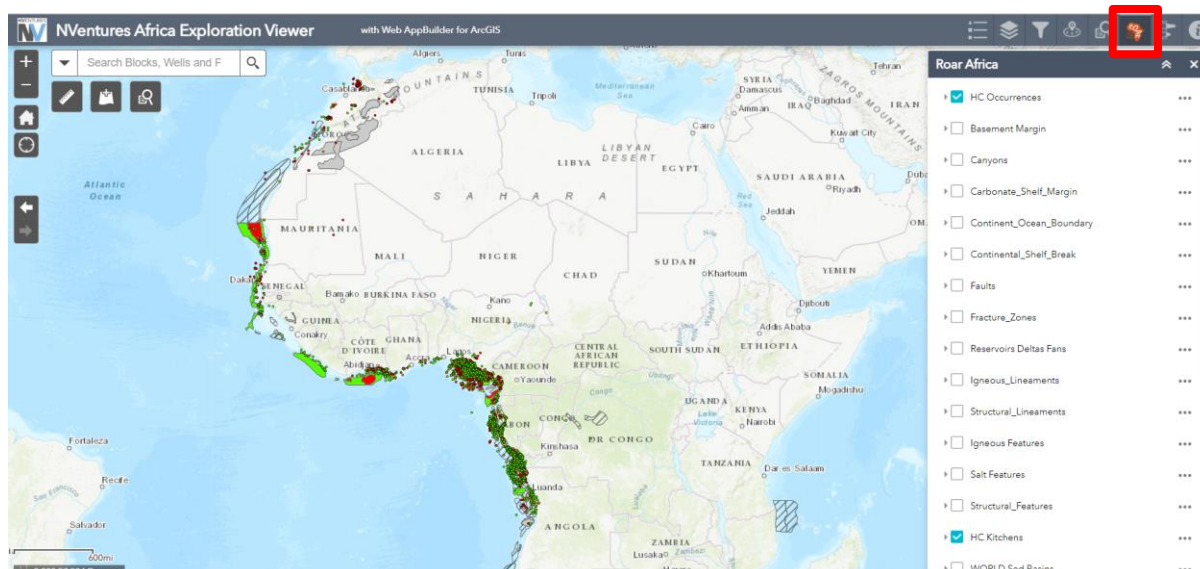
Click on the button in the top right of the viewer to open the “Search Near Location” feature. Type a feature (well, field, or block) into the search and click on the magnifying glass. Click on the button in the bottom right to search nearby this feature, at a distance radius selected on the sliding scale. This will zoom to the feature and show all wells, blocks, and fields within the selected distance.



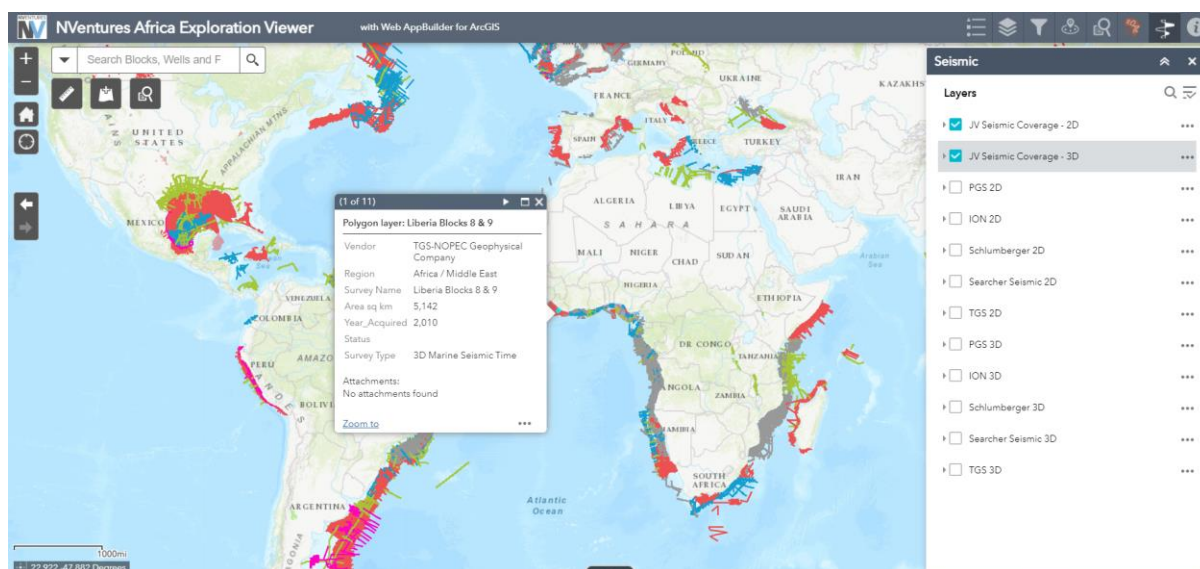
Click on the highlighted button to bring up the operator/partner search. Select wells/blocks/fields (e.g. Africa blocks Shell operates), and run the query to see the results on the map.



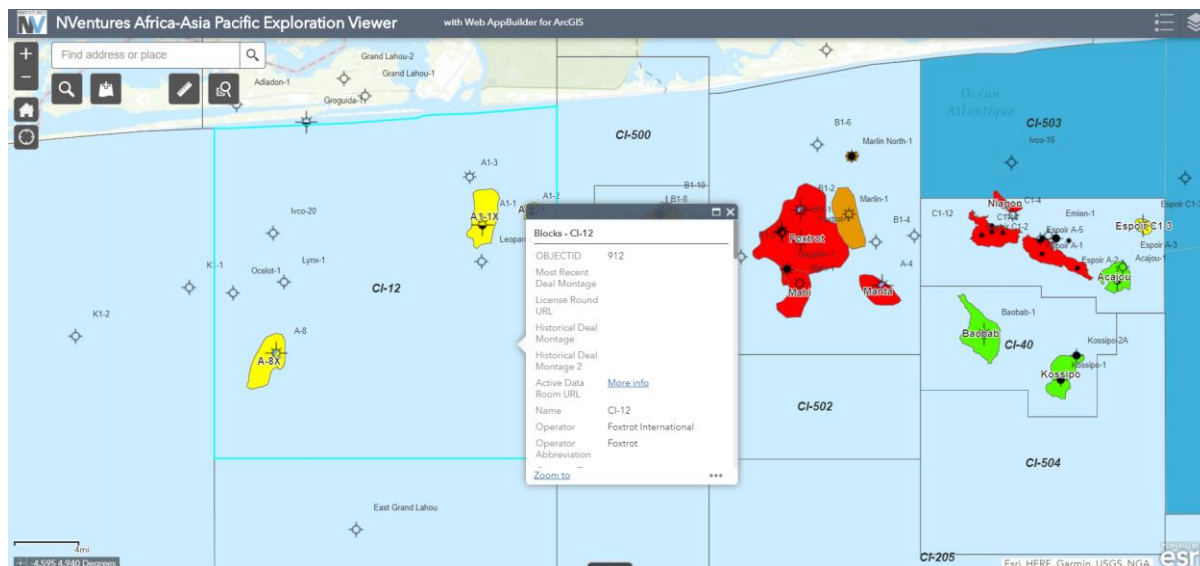
The Round Africa Report (RoAR) button highlighted contains several geological shapefile layers for West Africa.



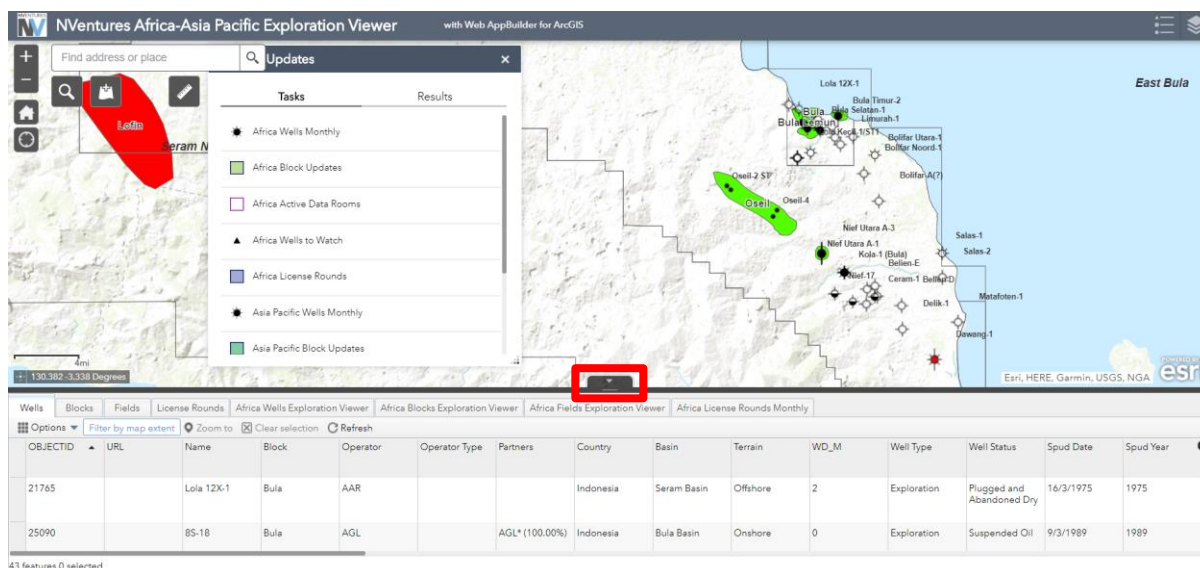
Click on the Seismic button to view seismic shapefile layers from NVentures JV partners. Clicking on a 2D seismic line or 3D survey brings up detailed attribute information on the seismic.



Click on Licences to open attribute information. Where there is a Deal Montage, Licence Round, or an Active Data Room (ADR), click on the “More Info” hyperlink to take you through to the additional content.



Click on the arrow at the base of the Exploration Viewer to pull up the database attribute table.



Click on the Add Data button (highlighted) to gain access to a wealth of free layers from various organisations on ArcGIS Online.

