

# NVentures Company Profile 2026

## Management Team

- Peter Elliott (Director)
- Ian Blakeley (Business Development)
- Kane Russell (GIS Manager)
- Madeleine Slatford (Regional Director)
- Jonathan Craig (Regional Director)
- Jon Ford (Regional Director)
- Alan Driscole (Geology Lead)



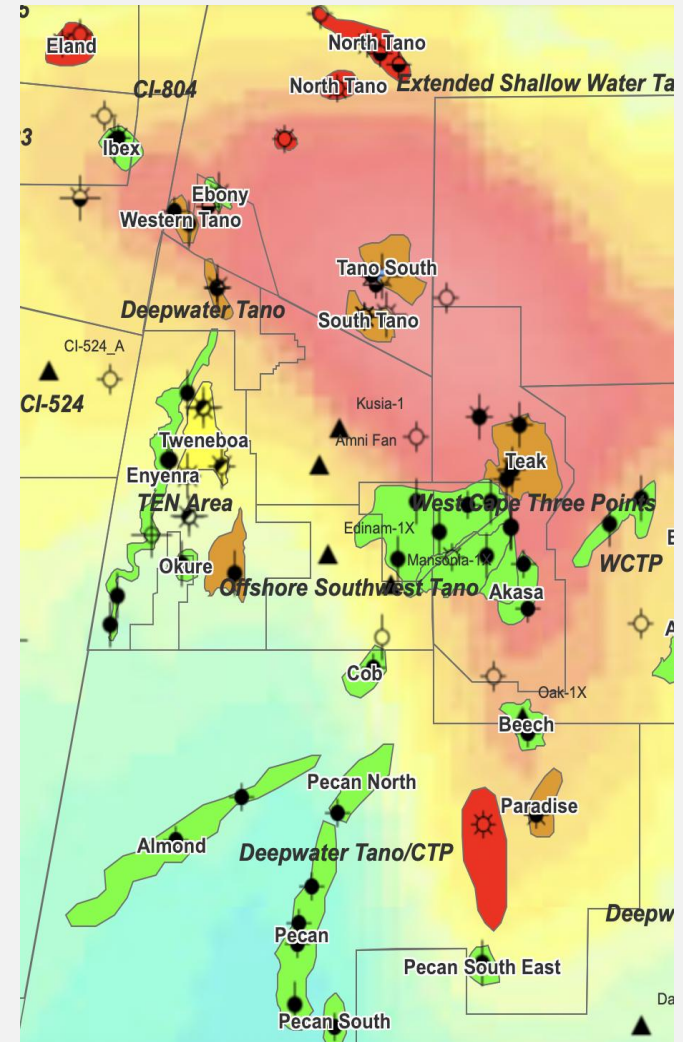
## Core Expertise

- Technical G&G Specialists
- GIS-based Information Experts
- Experienced Scouting Personnel
- Extensive Scouting Network



## Locations

- London (Mayfair)
- Liverpool

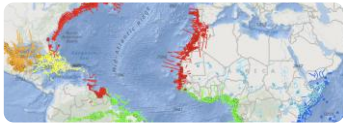




- E&P Business & Market Intelligence



- Hydrogen, New Energy & CCS



- Earthmoves Geological Databases



- UK Discovery Digest



- Exploration Performance & Country Maps



- Data Packs & Industry Collaborations

# E&P Business Intel : International Coverage



- Accurate, current, timely E&P intelligence for 6 continental regions
- No breakdown into smaller sub-regions – cost saving, more value

- Online GIS Access
- Monthly Activity Report
- Interim Alerts
- BD Database

- Africa
- Asia-Pacific
- Latin America & Caribbean
- Mediterranean & Europe
- Middle East & South Asia
- North America & US Gulf of Mexico

## Well to Watch – Bubale-1X

<b>Operator</b>	Murphy Oil
<b>Well</b>	Bubale-1X
<b>Partners</b>	Petroci
<b>Country</b>	Côte d'Ivoire
<b>Block</b>	CI-709
<b>Basin</b>	Tano Basin
<b>Water Depth</b>	2,386m
<b>Spud Date</b>	2026
<b>TD Date</b>	2026
<b>TD</b>	-
<b>TD Formation</b>	Lower Cretaceous
<b>Prospect</b>	Bubale

Deepwater Skyros  
WD -2,386m  
Depth to target  
TD

### Geological Context

### Comments

Bubale-1X is planned as the third in a three-well campaign by Murphy, designed to test the potential of five blocks acquired on production sharing contracts in June 2023. The first well, scheduled to spud in December 2025, is Civette-1X (licence CI-502), to be followed by Caracal-1X (CI-531). It was originally intended to then test a stacked Turonian / Santonian slope fan play on the Kobus prospect in the southern part of the block and in a water depth of 2,800m. Murphy elected to move the third well to Bubale following re-mapping from the CDI-23 merged / PSDM reprocessed 3D volume, delivered in by Viridien in late 2024 - citing lower well costs (in an approximate water depth of 2,390m and likely shallower objective), lower exploration risk and a larger resource volume of between 340 and 850 mmbbl oil equivalent.

### Latest Press Updates

06/11/25: [Q3 2025 Update](#)  
16/07/25: [Rig Contracted](#)

### Cost, Risk and Hydrocarbons

Cost - US\$60m  
Chance of Success - 22%  
Est. Hydrocarbons - 850 mmbce

### Location Map

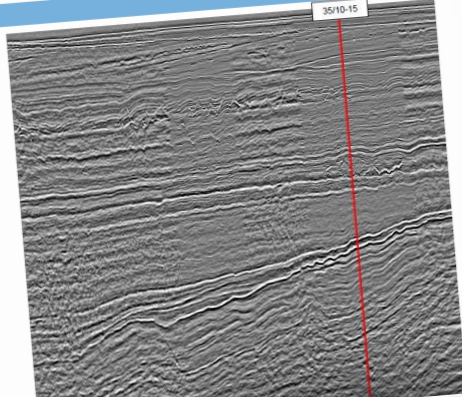
[www.NVentures.co.uk](http://www.NVentures.co.uk)

© NVentures Ltd 2025      Africa, December 2025      Page 181

# E&P Business Intel : Vital Geological Context

## Well Report – 35/10-15

Sismic Section



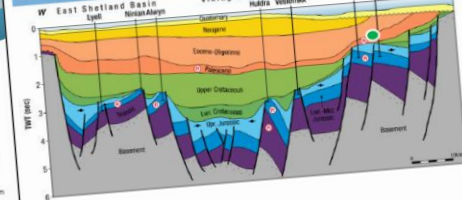
www.NVentures.co.uk

## Well Report – 35/10-15

Operator	DNO
Well	35/10-15
Partners	Aker BP, JAPEX, Conoco
Country	Norway
Block	1182 S
Basin	Northern North Sea Basin
Water Depth	357m
Spud Date	26 January 2025
TD Date	9 March 2025
TD	-2,500m
TD Formation	Paleocene
Prospect	Kjøttkake
Status	P&A Oil and Gas



Geological Context



Location Map



**Comments**

DNO has made an oil and gas discovery with 35/10-15 exploration well at the Kjøttkake prospect in PL 1182 S, confirming Paleocene injectite sandstones with excellent reservoir quality.

The well, drilled using the Deepsea Yantai semi-submersible, encountered a 41m oil column and a 9m gas column. It is located 27km northwest of the Troll C platform and 44km southwest of Gjøa.

Preliminary estimates indicate gross recoverable resources of 39-75 mmbob, with a mean of 55 mmbob.

**Latest Press Updates**

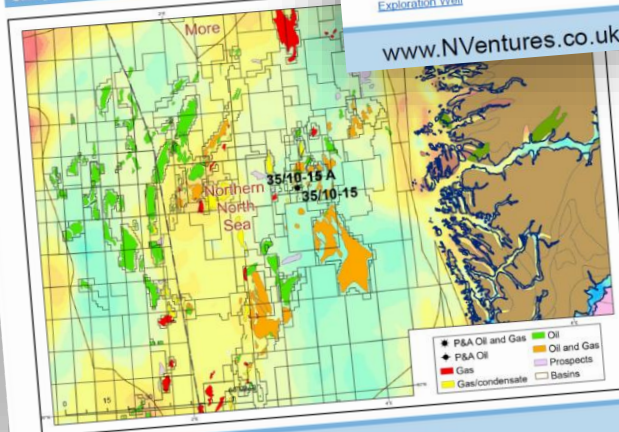
23/03/25	Discovery	06/02/25	DNO
12/02/25	Aker BP Exploration Well	08/01/25	Drill Permit

**Hydrocarbons**

Tests - Shows - 50m Oil and Gas in Sotra Formation

## Well Report – 35/10-15

Geological Map



● P&A Oil and Gas  
 ● P&A Oil  
 ● Gas  
 ● Gas/condensate  
 ■ Oil and Gas  
 ■ Prospects  
 ■ Basins



www.NVentures.co.uk

# E&P Business Intel : Online GIS Market Activity

**NVentures Exploration Viewer: Africa**

Search: Find address or place

4 Jun 2025: Ghana, Tullow Oil has signed a license to extend the West Cape Three Points and Deepwater Tano licences to 2040. It includes an approval to drill on the Jubilee field with partners Kosmos Energy, GNPC and Explorco, at a cost of US\$2 billion.

30 May 2025: Ghana, Tullow's JBE-P well is being drilled by the Noble Venturer drillship. Drilling will start taking production initially from an expected start of Q3 2025, to 4500 bopd in 2026. - Appraisal & Production

29 May 2025: Ghana, Eni Ghana and its Offshore partners, Vitol and GNPC are drilling the Sankofa East 1X Side Track 2. The well is being drilled by the Noble Venturer drillship. The well is in close proximity to the John Agyekum Kufour FPSO.

28 May 2025: Cote d'Ivoire, Eni drilled Cachalot-1X on CI-401. The well encountered oil shows in the Maastrichtian. - Exploration Drilling

22 May 2025: Ghana, Tullow has reported that its Ghana drilling campaign has commenced with the first well, a Jubilee producer, expected onstream in Q3 of 2025. Ongoing interpretation of the recently completed 4D seismic acquisition will aid in the location of future wells. -

22 May 2025: Ghana, Ghana's parliament has announced it will discuss future development of the Pecan field next week. An investment plan for the deepwater Pecan project is being put forward by Lukoil, who have a 38% stake in the Deepwater Tano CTP block. - Appraisal, Development &

News Date is between: [ ] and [ ]

News Type is: - All -

Country is: - All -

Company is: - All -

Apply Cancel

Esri, HERE, Garmin, USGS, NGA Powered by Esri

# E&P Business Intel : BD Opportunities

**NVentures Exploration Viewer: Africa**

**License Round: Angola 2025 Bid Round**

Zoom to

License Round URL	View
Name	35/25
Country	Angola
Basin	Kwanza Basin
Terrain	Offshore

**WCTP2 Discovered Assets**

In excess of 1.3 billion barrels of oil have been discovered to date in WCTP2, in sandstones deposited in several stratigraphic intervals.

Field	STOODIP	RF %	API	Age
Alfina	686	35	31	Cenomanian
Banda	62	30	40	Albian
Beech (WCTP-2 Share)	122	35	30	Turonian
Odum West	235	30	19	U Campanian
Odum East	102	30	19	Maastrichtian
Tama (liquid)	109	35	46	Turonian
<b>Total</b>	<b>1,349</b>			
Tama (Gas)	670 bcf	80	gas	Turonian

SPRINGFIELD E&P  
Confidential to MMA members

**NVentures Layers**

- Africa Wells to Watch
- Africa Wells - Montages Highlighted
- Africa Wells
- Africa Blocks
- Africa Grid Layer
- Africa Blocks - Symbolised By Lic Status
- Africa Blocks - Deals Montages Highlighted
- Active Data Rooms
- Africa Fields
- Africa Prospects Exploration Viewer
- Africa License Rounds
- World Bathymetry

**Filter**

- Africa Drilling Wells
- Africa Wells
- Africa Blocks
- Africa Fields - Drilled Resource Opportunities
- Africa Wells with JV Seismic

# E&P Business Intel : Data Filtering & Analysis

**NVentures Exploration Viewer: Africa**

Find address or place

**Tables**

Africa Wells to Watch

Name	Block	Operator	Partners
Cheetah-1	PEL 83	Galp	NAMCOR, Custo
Eel-1	PEL 83	Galp	NAMCOR, Custo
Marula-1	2011A/ PEL 94	Global	Namcor, Aloe
Welwitschia Deep	2011A/ PEL 94	Global	Namcor, Aloe
2 Exploration Wells	PEL 93	Monitor Exploration Ltd	88 Energy, Namc
2815/05-1	PEL 79	NAMCOR	Giraffe Energy
Kavango West-1X	1819/ PEL 73	ReconAfrica	NAMCOR
Kambundu-1	1819/ PEL 73	ReconAfrica	NAMCOR
D3	1819/ PEL 73	ReconAfrica	NAMCOR
Wisdom 5-1	1820/PEL 73	ReconAfrica	NAMCOR 5%
Cumezao 8-3	PEL 73	ReconAfrica	Namcor

Total: 25 | Selection: 0

200 km

Set filter

Africa Wells to Watch

AND OR + Add

Country is Namibia

Estimated Res... is greater... 200

Esri, HERE, Garmin, FAO, NOAA, USGS Powered by Esri

# Hydrogen, New Energy & CCS : Activity Report

## NVentures New Energy Report Following Global Hydrogen & Carbon Capture Developments

### Full Online GIS database with a global monthly roundup report:

- Hydrogen Report covering global production, transmission, transport and technology activity across the sector
- Frequent interim updates
- GIS monthly updates
- Natural hydrogen and helium exploration activity
- CCUS bid rounds, licencing and deal updates
- New Energy news coverage, including wind, solar and geothermal activities
- Company-wide subscription

**Hydrogen News**

- 12/1/2020, 3.26 pm - Tenaris has agreed a partnership with Iliad Hydrogen for the development of a hydrogen trunk refuelling network in California.
- 12/1/2020, 3.43 pm - Monolith Materials has received an investment from Mitsubishi Heavy Industries to support its hydrogen manufacturing technology.
- 12/1/2020, 4.05 pm - FortisBC is investing C\$500,000, via the University of British Columbia's Okanagan campus, to study how the utility can further reduce emissions from its natural gas supply by delivering hydrogen through its extensive distribution network.
- 12/1/2020, 4.31 pm - Fusion Fuel has entered into a partnership with EREC to rollout its innovative micro-electrolyser technology, in Spain, for producing green hydrogen.
- 12/3/2020, 12.27 pm - Enel & Eni have joined forces to bring online 20 MW of hydrogen capacity between 2022 and 2023, with two 10 MW pilot electrolyzers to be built at unspecified Eni refineries.

**HYDROGEN AND NEW ENERGY** H<sub>2</sub>

**Upcoming Industry Events**

2021

- 10-11 February Hydrogen, Paris
- 8-10 March 2nd World Hydrogen Summit, Virtual
- 17-18 March Hydrogen & Fuel Cells Energy Summit, Paris
- 9-10 June Hydrogen Technology Conference & Expo, Stuttgart, Messe
- 20-22 September World Hydrogen Conference, Vienna
- 2 September 2nd International Hydrogen, Austria Conference, Graz
- 8 October Hydrogen Cities Conference, Virtual
- 19C European Hydrogen Energy Conference, Maastricht

**New Project – North-C-Methanol, North-CCU-Hub**

Project Name	North-C-Methanol
Stage	Construction
Industrial Type	Green Methanol
Location	Industry
Operator	North-C-Methanol
Partners	Equinor, Shell, Shell Global Energy, Fluoro, Oryzalis, Shell Global Energy, Equinor, Oryzalis, Shell Global Energy, Equinor, Oryzalis
Date	31st October 2020
State	UK
Country	England
Capacity	10.000 tpa (initially)
Power Source	10.000 tpa (initially)
Carbon Intake	10.000 tpa (initially)
Output	10.000 tpa (initially)
Comments	Construction of two large scale green methanol and supporting infrastructure in the North Sea Hub in England
Hydrogen	North-C-Methanol Project, North-C-Methanol

**The North-C-Methanol project**

CO<sub>2</sub> capture (10.000 tpa) → H<sub>2</sub> (10.000 tpa) → Methanol (10.000 tpa) → Methanol (10.000 tpa)

Water → H<sub>2</sub> (10.000 tpa) → Methanol (10.000 tpa) → Methanol (10.000 tpa)

CO<sub>2</sub> capture (10.000 tpa) → H<sub>2</sub> (10.000 tpa) → Methanol (10.000 tpa) → Methanol (10.000 tpa)



# Hydrogen, New Energy & CCS : Online GIS

NVENTURES
NV
N Ventures Exploration Viewer: Hydrogen

☰ 📄 🗺️ 📊 📍 🔍 📄 📄 📄

### N Ventures Layers

- Hydrogen Other Projects
- Wells
- CCUS Projects View - CCUS Projects
- CCUS Blocks
- Ammonia Plants
- Associated Infrastructure - Gas Pipelines
- Infrastructure - Wind Farms
- Associated Infrastructure - Wind Farms Points

## 1st Carbon Storage License Round 2022

<b>Country</b>	United Kingdom
<b># Licenses</b>	21 Offshore Storage Licenses
<b>Pre-Qualification Date</b>	13th September 2022
<b>Deadline</b>	13th May 2023
<b>Award Schedule</b>	15th September 2023
<b>Licensing Authority</b>	NSTA
<b>Agent</b>	-

**Comments**

The list of awarded companies for the 1st Carbon Storage License Round was announced on 15th September 2023. Fourteen companies have been awarded 21 licenses in depleted oil and gas reservoirs and saline aquifers covering around 12,000 sq km - including sites near Aberdeen, Teesside, Liverpool, and Lincolnshire.

The locations could store up to 30 million tonnes of CO<sub>2</sub> per year by 2030, approximately 10% of UK annual emissions which were 341.5 million tonnes in 2021.

Shell, Perenco and Eni have all been awarded licenses off the coast of Norfolk in sites which could form part of the Bacton Energy Hub - a carbon storage, hydrogen and offshore wind project.

The licenses offered include a variety of geological storage structures, and the criteria used to select them also included proximity to existing infrastructure and industrial clusters.

## Well Report – Blythe 13-20

**Geological Imagery**

HyTerra's white hydrogen resource in Kansas is created naturally by the Earth.

**Offtake near Nemaha Project Within 250km**

- 15 Ethanol
- 3 Petrochemical/refining
- 8 Ammonia plant

Esri, HERE, Garmin, FAO, NOAA

# Earthmoves : Digital Geological Databases

## NVentures Earthmoves Regional Database

Digital Maps, Regional and Block Hydrocarbon Evaluation Reports

A large database of public domain information sourced from various outlets, including academic publications.

The database covers a range of geological information;

- Wells, sections and seismic
- Exploration history
- Structural history
- Plays and prospects
- Basin history

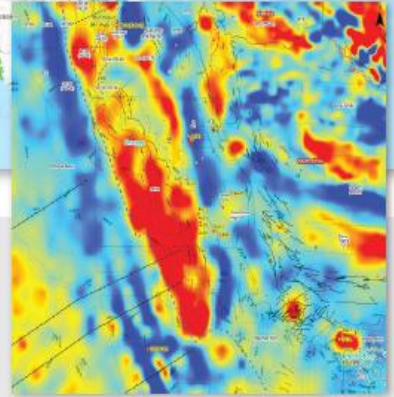
A number of interpreted layers are integrated in the database, with key layers comprising;

- Structural Interpretation, folds, faults and fabric
- Basin distribution
- Gravity and magnetics
- Palaeogeography
- Standardised format
- User friendly
- GIS based system
- Basin Dossiers



Database	Acronym	Number of Links		
		Wells	Sections	Dossiers
Africa Interior Rifts	AIR	170	490	33
Bay of Bengal	BOB	111	449	10
Northern Caribbean	CAB	55	420	8
Central Atlantic Margins	CAM	540	1120	24
East Africa Margin	EAM	198	510	12
East Mediterranean	EMed	194	386	11
Gulf of Mexico	GOM	220	1130	9
North Atlantic Margins	NAM	65	550	-
South Atlantic Margins	SAM	885	3374	39
<b>TOTAL</b>		<b>2438</b>	<b>8429</b>	<b>146</b>

Earthmoves covers 9 regions and 146 basins with ongoing evolution



# Earthmoves : GIS Integration

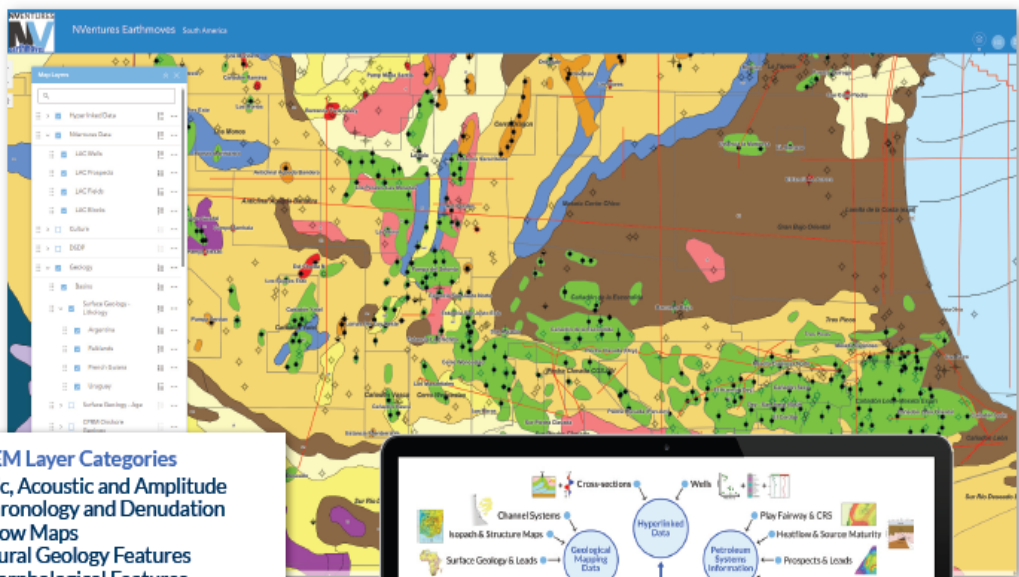
## NVentures Earthmoves Regional Database

Digital Maps, Regional and Block Hydrocarbon Evaluation Reports

Earthmoves has been one of the premier sources of geotechnical data and reports for global basin, asset and bid round analysis for over 20 years.

NVentures will continue to develop the content and coverage of the Earthmoves databases.

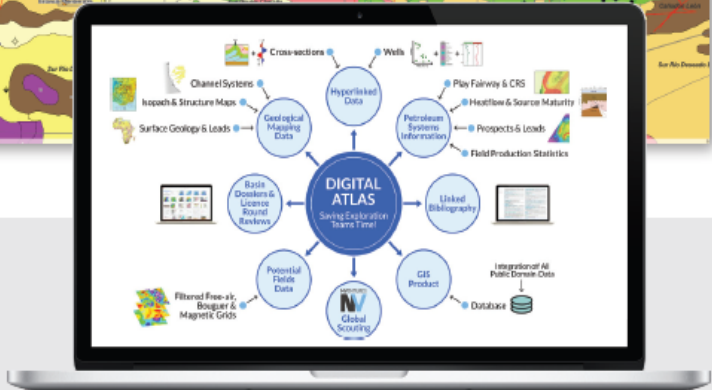
- Integration into an Online Platform (ArcGIS Online)
- Annual updates subscription available
- CCS and New Energy databases – Global salt GIS layers, hydrogen and CCS activity
- 2023 Update – play fairways, geology, publications, wells and seismic information and bibliography updates



- Typical EM Layer Categories**
- Seismic, Acoustic and Amplitude
  - Geochronology and Denudation
  - Heatflow Maps
  - Structural Geology Features
  - Geomorphological Features
  - Sediment Isopach and Structure Maps
  - Play Maps
  - Prospects and Leads
  - Paleofacies
  - Risk Maps
  - Geology and Culture
  - Surface Geology
  - Gravity and Magnetics
  - Drainage

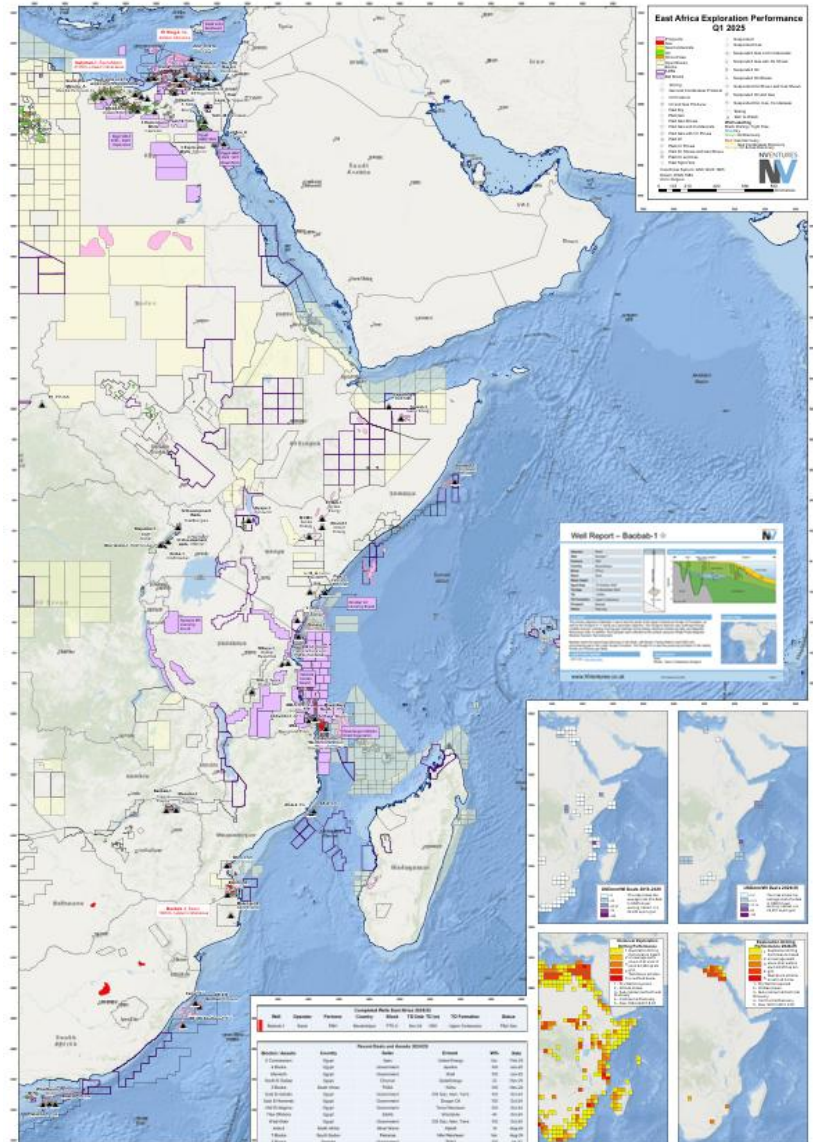
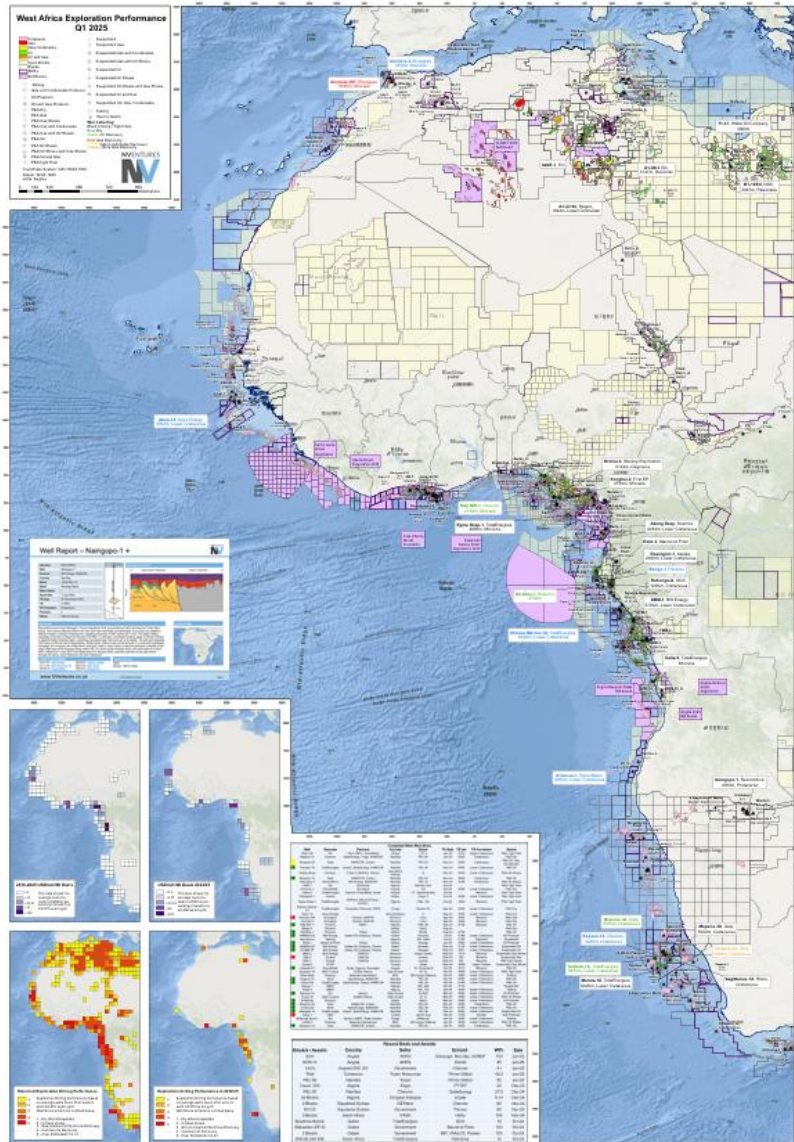
NVentures-Earthmoves integration gives access to:

- Scouting Info as seen in NVentures + associated layers
- Earthmoves Digitised Atlas + associated layers





# Exploration Performance & Country Maps





# NVentures Ltd : Joint Venture Partnerships



# Expanding Industry Collaboration Portfolio

## NVentures Horizon

### Geological and Hydrocarbon Prospectivity Studies

- 3 Study Areas
  - Arafura Sea Prospectivity
  - East Java and East Java Sea Petroleum Systems Evaluation
  - North Sumatra Geochemistry Study
- What's Included
  - Geo prospectivity studies
  - Geo framework
  - Petroleum system evaluation
  - Geo chemical modelling
  - Play fairways
  - Success/failure analysis
  - Full integration with NVentures scouting and data
- Indonesian PDF & GIS Product
  - ArcGIS online product
  - Stand alone ArcGIS product

Comprehensive geological and hydrocarbon prospectivity studies

Well data and Geochemical modelling

## NVentures SDP JV

### Dashboard - Libya

Block License Round: None | Well Name: None | SDP Well Status: None

SDP Seismic Lines: 7.9k (Last update: 16 seconds ago)

SDP Seismic Length: 235,098 km (Last update: 16 seconds ago)

SDP Wells: 5.4k (Last update: 16 seconds ago)

SDP Well Files: 7.5k (Last update: 16 seconds ago)

SDP Well Logs: 65k (Last update: 16 seconds ago)

NVentures Wells: 2.7k (Last update: 16 seconds ago)

NVentures Well Manages: 16 (Last update: 16 seconds ago)

NVentures Blocks: 300 (Last update: 16 seconds ago)

Producing Conventional Fields: 136 (Last update: 16 seconds ago)

NVentures Blocks: 335 (Last update: 16 seconds ago)

NV Block Manages: 43 (Last update: 16 seconds ago)

Powered by Eni

## NVentures Trove JV

### Dashboard - Côte d'Ivoire / Ghana

Trove Montages: 201

Well Name Manages: 170

Reservoirs Oil Reserves: 3,671 (mmbbls)

Reservoirs Gas Reserves: 8,914 (Bcf)

Oil of Total: 47.3%

Oil of Gas: 52.7%

Trove Data: Baleine

Basin	Ivorian Tano
Basin Type	Rift Basin
Onshore/Offshore	Offshore
Water Depth (m)	1200
Deepwater	Deepwater
Producing Flag	Producing
Oil column - max (ft)	157 480314950629F3
Detailed stratigraphy	Santonian, Cenomanian/Albian
Age	Cretaceous
Reservoir Lithology	Clastic
Reservoir Lithology Detail	Sandstone
Depositional Environment	Turbidite
Depositional Environment Detail	Fan complex
API Gravity	40
Hydrocarbon type	Light Oil
STOIIP (mmbbls)	2500
GIP (Bcf)	3300
Drive mechanism	Natural Depletion
Comments	Eni and Petroci Holding will start studies for a full block development of the

NVentures Wells: 287 (Last update: 16 seconds ago)

NVentures Well Manages: 287 (Last update: 16 seconds ago)

NVentures Estimated: 7.6k (mmbbls) (Last update: 16 seconds ago)

NVentures Producing/Fields: 10 (Last update: 16 seconds ago)

NVentures Blocks: 52 (Last update: 16 seconds ago)

NV Block Manages: 52 (Last update: 16 seconds ago)

## Contacts

---

### LONDON

**Peter ELLIOTT, Director**

Mobile : +44 (0) 7971 073198

[peter.elliott@nventures.co.uk](mailto:peter.elliott@nventures.co.uk)



### LONDON

**Ian BLAKELEY, Business Development**

Mobile : +44 (0) 7860 930923

[ian.blakeley@nventures.co.uk](mailto:ian.blakeley@nventures.co.uk)



[www.nventures.co.uk](http://www.nventures.co.uk)